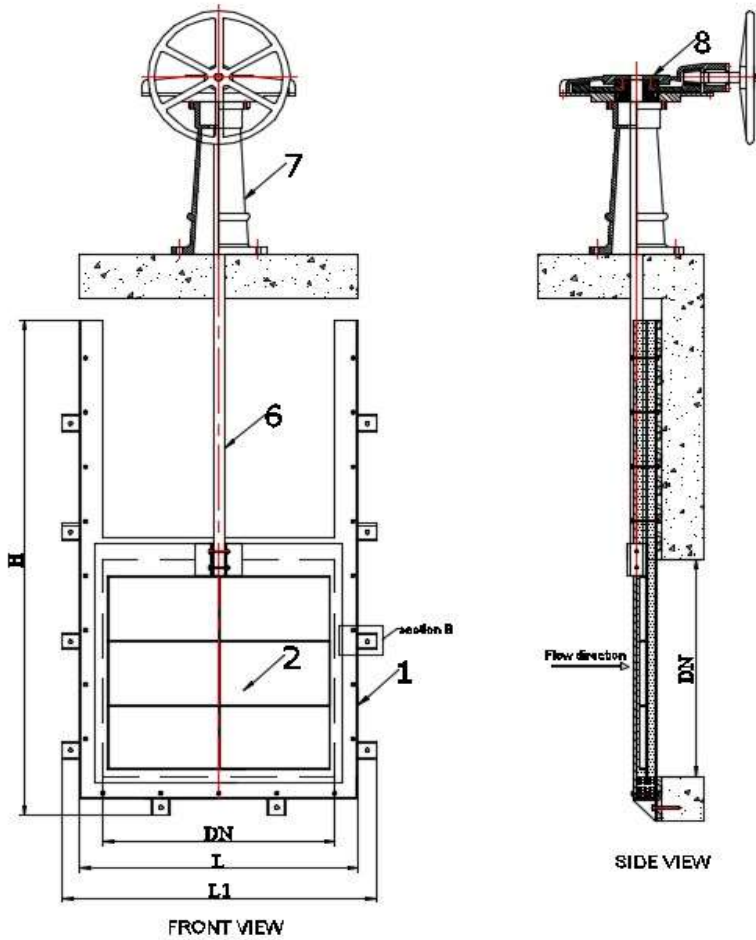


# SLUICE GATE สลักเหล็ก



DN	L	L1	H
400x400	552	704	1060
500x500	652	804	1260
600x600	752	904	1460
800x800	1000	1200	1950
1000x1000	1200	1400	2300
1200x1200	1400	1600	2700
1500x1500	1754	2008	3420

NO	PART NAME	MATERIAL	REFERENCE
1	Frame	Stainless Steel	A 240 Type 304 / A 240 Type 316
2	Disc	Stainless Steel	A 240 Type 304 / A 240 Type 316
3	Body Seat	Polyethylene (uhmwpe)	PE-1000
4	Articulate Frame	Stainless Steel	A 240 Type 304
5	Compression cord	Rubber (EPDM)	D-2000
6	Stem	Stainless Steel	A 276 Type 304 / A 276 Type 316
7	Stand	Cast Iron	A 126 Class B
8	Gear Box	-	CPE
9	Bolt & Nut	Stainless Steel	A 276 Type 304 / A 276 Type 316



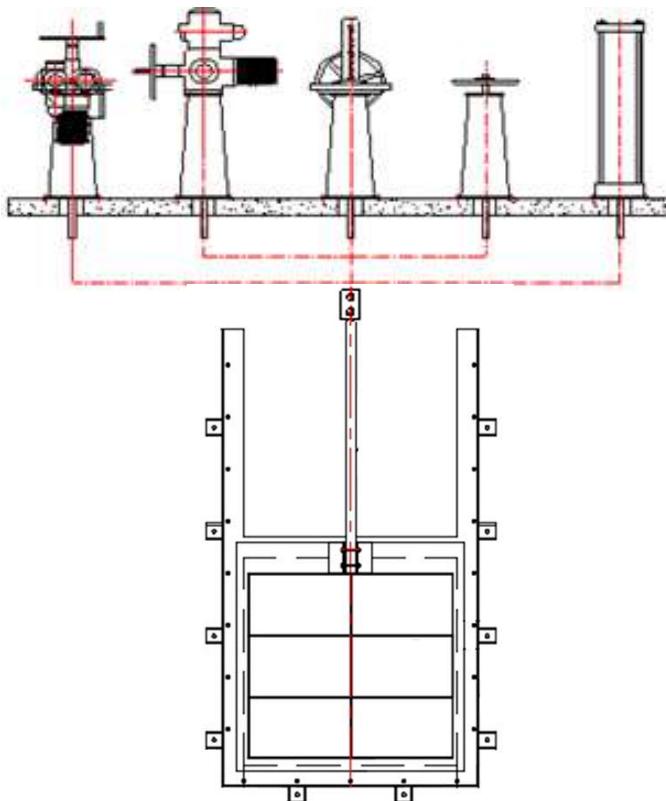
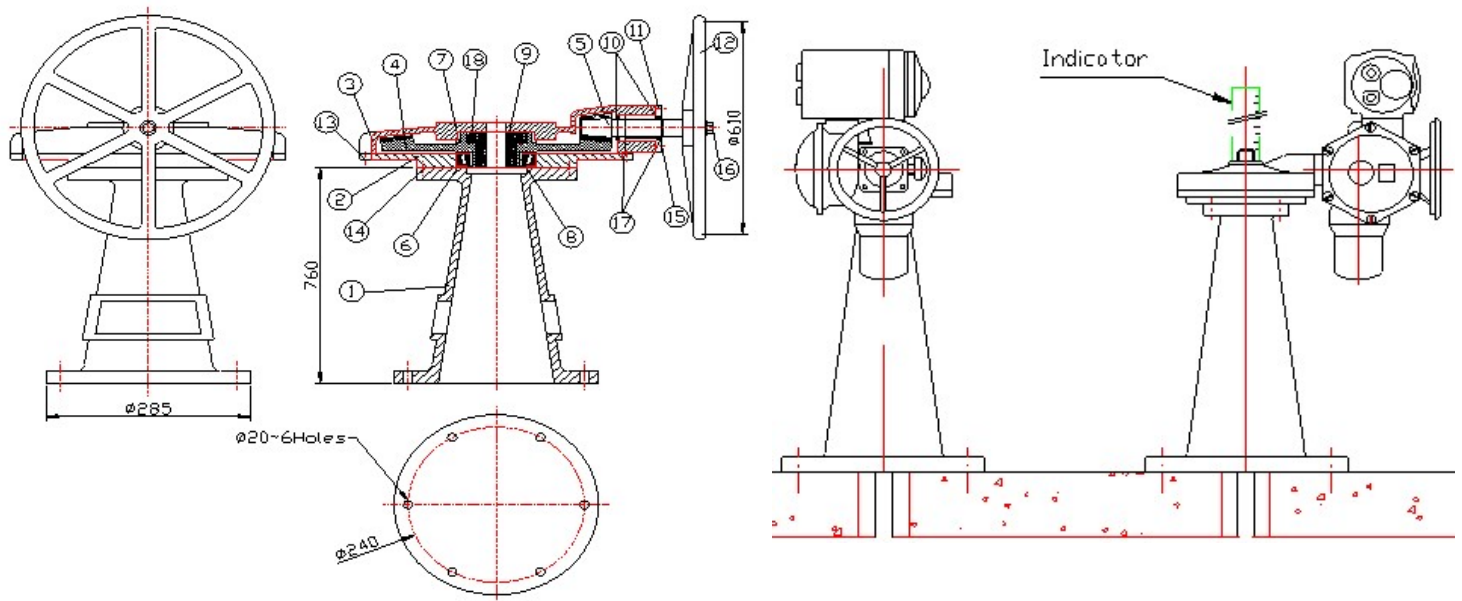
**CHAIPONG ENGINEERING CO.,LTD.**

Tel : 02-482-1526-7 Fax : 02-019-8911

email : chaipong\_cpe@hotmail.com

Line ID : @chaipong

# SLUICE GATE สแตนเลส



No.	PARTS NAME	MATERIAL	REFERENCE
1	Stand	Cast Iron	A 126 Class B
2	Body	Cast Iron	A 126 Class B
3	Cover	Cast Iron	A 126 Class B
4	Bevel Gear	Cast Iron	A 126 Class B
5	Bevel Pinion	Steel	A 307 Grade B
6	Ball Bearing	-	No. 30318
7	Upper Bushing	Bronze	BC 6
8	Lower Bushing	Bronze	BC 6
9	Drive Bush	Bronze	BC 6
10	Ball Bearing	-	No. 6007
11	End Cover	Cast Iron	A 126 Class B
12	Hand Wheel	Cast Iron	A 126 Class B
13	Bolt for Cover	Steel	A 307 Grade B
14	Bolt for Body	Steel	A 307 Grade B
15	Bolt for End Cover	Steel	A 307 Grade B
16	Nut for Hand Wheel	Steel	A 307 Grade B



**CHAIPONG ENGINEERING CO.,LTD.**

Tel : 02-482-1526-7 Fax : 02-019-8911

email : chaipong\_cpe@hotmail.com

Line ID : @chaipong