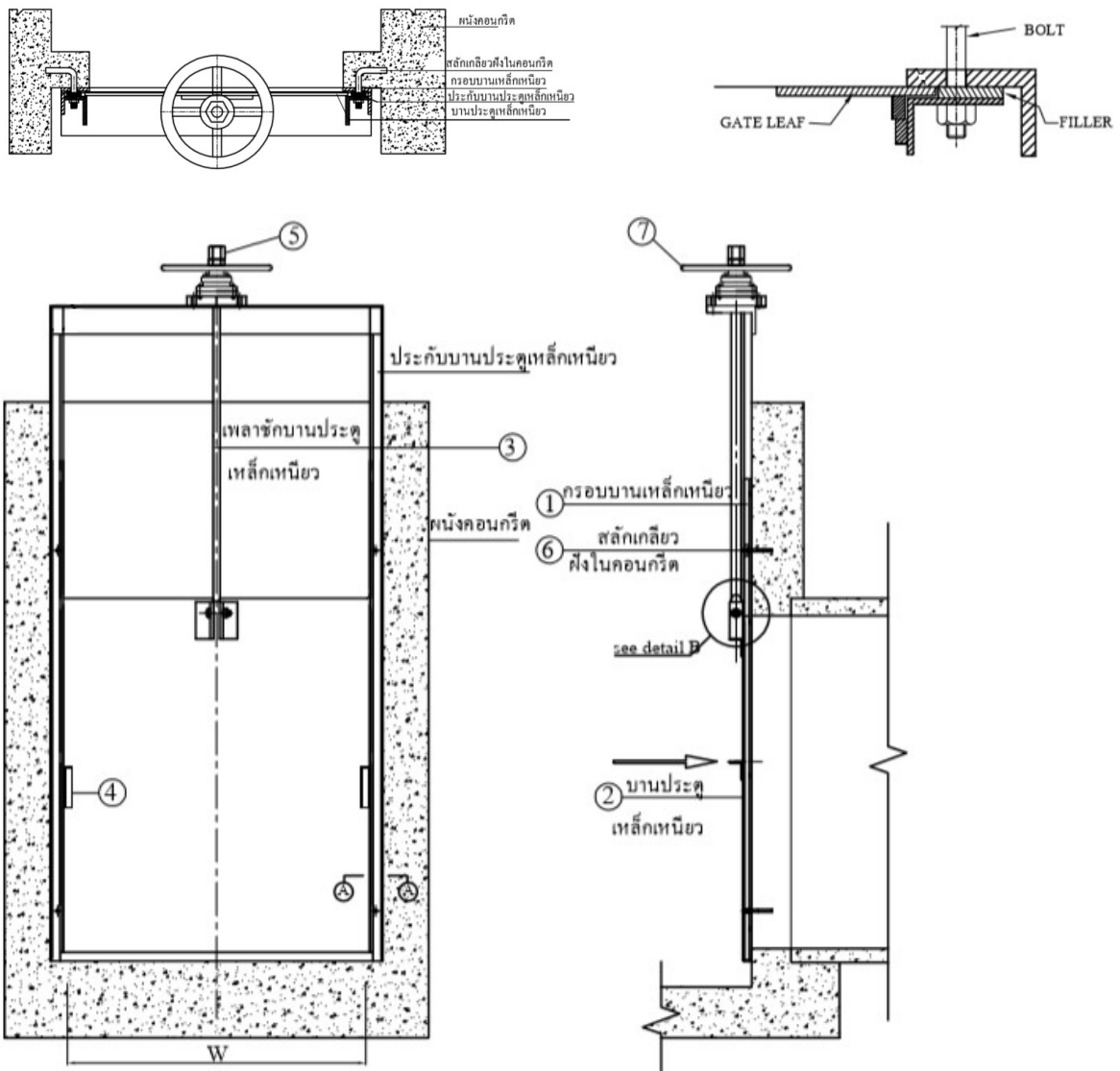


SLUICE GATE เหล็กเหนียว



| | | | | |
|-----|-------------|------------------|---------------|-------|
| 07 | Hand Wheel | Cast Iron | A 126 Class B | 1 set |
| 06 | Anchor Bolt | Galvanized Steel | 17100 St.37-2 | 1 set |
| 05 | Stopper | Steel | SS 400 | 1 set |
| 04 | Side Wedge | Steel | SS 400 | 1 set |
| 03 | Stem | Steel | SS 400 | 1 ea |
| 02 | Disc | Steel | SS 400 | 1 ea |
| 01 | Frame | Steel | SS 400 | 1 ea |
| NO. | PART NAME | MATERIAL | DESIGNTION | Q'TY |

หมายเหตุ สามารถผลิตได้ขนาดที่ระบุตามช่องน้ำผ่าน และสามารถเปลี่ยนวัสดุเป็นวัสดุอื่นได้ เช่น Stainless Steel ขึ้นอยู่กับข้อกำหนดและความต้องการของลูกค้า

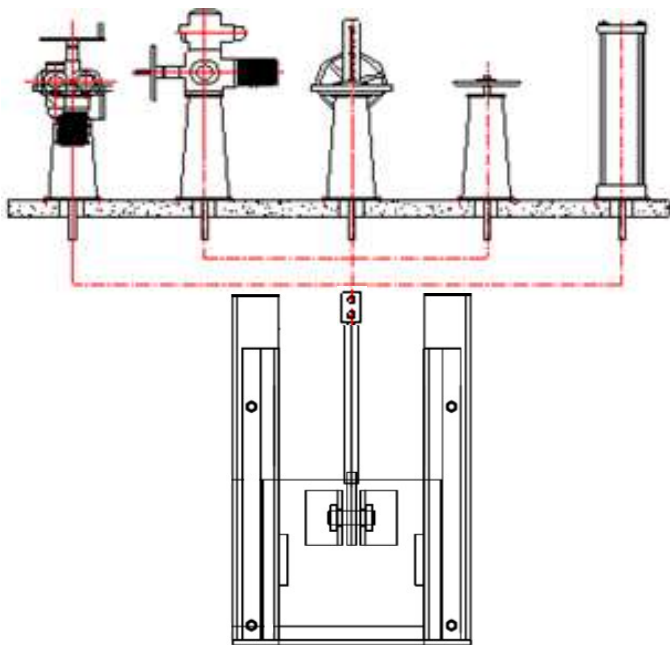
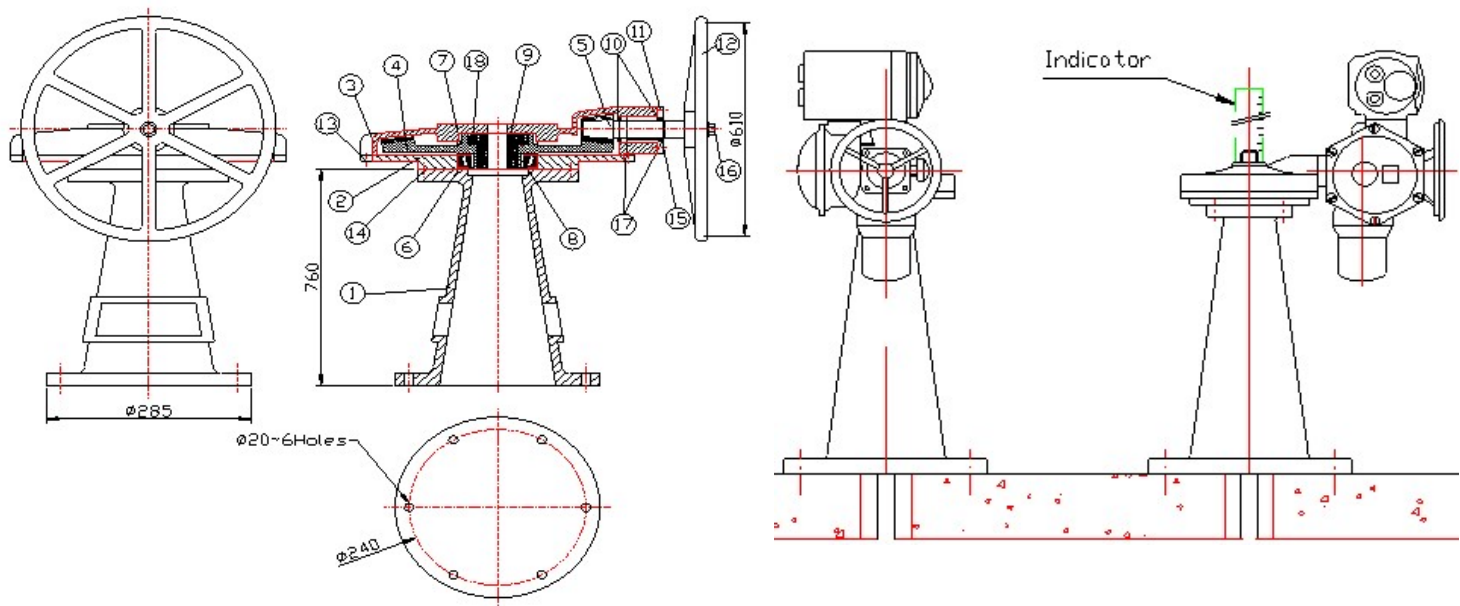


CHAIPONG ENGINEERING CO.,LTD.

Tel : 02-482-1526-7 Fax : 02-019-8911

email : chaipong_cpe@hotmail.com

SLUICE GATE เหล็กเหนียว



| No. | PARTS NAME | MATERIAL | REFERENCE |
|-----|--------------------|-----------|---------------|
| 1 | Stand | Cast Iron | A 126 Class B |
| 2 | Body | Cast Iron | A 126 Class B |
| 3 | Cover | Cast Iron | A 126 Class B |
| 4 | Bevel Gear | Cast Iron | A 126 Class B |
| 5 | Bevel Pinion | Steel | A 307 Grade B |
| 6 | Ball Bearing | - | No. 30318 |
| 7 | Upper Bushing | Bronze | BC 6 |
| 8 | Lower Bushing | Bronze | BC 6 |
| 9 | Drive Bush | Bronze | BC 6 |
| 10 | Ball Bearing | - | No. 6007 |
| 11 | End Cover | Cast Iron | A 126 Class B |
| 12 | Hand Wheel | Cast Iron | A 126 Class B |
| 13 | Bolt for Cover | Steel | A 307 Grade B |
| 14 | Bolt for Body | Steel | A 307 Grade B |
| 15 | Bolt for End Cover | Steel | A 307 Grade B |
| 16 | Nut for Hand Wheel | Steel | A 307 Grade B |



CHAIPONG ENGINEERING CO.,LTD.

Tel : 02-482-1526-7 Fax : 02-019-8911

email : chaipong_cpe@hotmail.com